



explore QUEENCREEK

Inside:

Queen Creek History
Sites of Interest
Landmarks
Shopping
Dining
Business Listings
Map
and more



Queen Creek
CHAMBER OF COMMERCE

"Always fast, efficient & knowledgeable!"
~Audra G.

"Prompt, Efficient, and Excellent Service"
~Karin S.

Professional, Timely & Honest Mechanical Services!



COOLING



HEATING



DUCT CLEANING



PLUMBING



WATER



For Fast, Reliable Service, Call Us!

480-988-0958

7am to 7pm, 7 days a week

**We offer 0% financing
for up to 72 months on
qualifying purchases!
Replace your old or broken
HVAC equipment today!**

Request Service Online
www.sterlingair.us



ROC# 260843, 224400- Licensed. Bonded. Insured.

Sterling
**Sterling
Services**

QCPAC 18th Theatre Season 2021-2022

The Addam's Family - A New Musical

August 27-30, 2021

Thompson Square

September 11, 2021

Jordan Smith

September 18, 2021

Shrek The Musical Jr.

November 18-23, 2021

Rockin' Through The Decades!

January 29, 2022

Cinderella

February 11-14, 2022

You've Got a Friend, Carole King

February 19, 2022

Dinosaur World Live!

February 25, 2022

Elvis, The Early Years

February 26, 2022

BYU International Folk Dance Ensemble

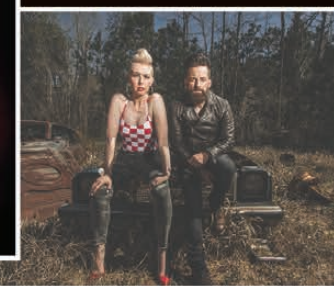
March 3, 2022

Best of Broadway

March 4, 2022

Disney's Moana Jr.

April 6-11, 2022



2021-2022
**YOUTH
THEATRE
CAMP**
Ages 5-12

FALL BREAK:

Adventure Camp - Sept. 27-Oct. 1

So Many Ways to Be Wicked Camp - Oct. 4-8

SPRING BREAK:

Broadway Bound Camp - March 7-11

It's a Jungle Out There Camp - March 14-18

SUMMER BREAK:

School's Out for Summer - June 10-14



QCPAC.com • 480.987.SHOW (7469)



queencreekperformingartscenter



@qc_arts



qcpac1

TABLE OF CONTENTS

History 6

Sites of Interest..... 10

Landmarks 12

Demographics..... 17

Health Care & Services (QCPD, Fire & Medical) 18

Agritainment..... 19

Shopping/Dining 22

Things to Do 24

Map..... 28

Horseshoe Park & Equestrian Centre ... 34

Events 36

Schools..... 38

Places of Worship 40

Business Directory 41



ON THE COVER

Photo by Kaylee Moats
The windmill outside the San Tan Historical Society

QUEEN CREEK CHAMBER OF COMMERCE
22246 S. Ellsworth Rd.
Queen Creek, AZ 85142
480-888-1709
queencreekchamber.com

Photos Courtesy of
HK PHOTO SMILES
Owner: Holli Cipowski
hkphotosmiles.com
KAYLEE MOATS

A Publication of
INTERNATIONAL MINUTE PRESS OF GILBERT
Owner: Dave Rindfleisch
impgilbert.net

Design by
EYEDeAL DESIGN AND ADVERTISING, LLC
Owner: Terri Shelow
928-951-3788

WELCOME

explore QUEENCREEK

Whether you’re brand new or have been here a few years, we want to help you discover all that our wonderful community has to offer. Visit us at ExploreQueenCreek.com for our latest digital magazine and get a behind the scenes look at some of Queen Creek’s biggest attractions! And be sure to download our mobile app to find businesses, events and news around town.

You can also stop by and see us at the Visitor Center located at the Queen Creek Chamber of Commerce to get all kinds of ideas for summer activities and day trips!

Queen Creek has earned recognition and awards on regional, state, and national levels, and it’s been named “One of America’s Friendliest Cities” by Forbes magazine. We hope you enjoy living here as much as we do!



SCAN ME!

WELCOME

HISTORY



Queen Creek's Name

The Town of Queen Creek's name originated over a hundred miles away. Up in the eastern mountains surrounding the Town of Superior, the land is rich with ore. One of the many mines that opened up in those mountains was the Silver Queen. At its base was a creek known as the Picket Post Creek, named after the oddly shaped mountain above it. When the Silver Queen Mine opened for production, the name of the Picket Post Creek was changed to Queen Creek. That creek runs down from the mountains, past the mine, through the Queen Creek Canyon, into the area surrounding the present-day Town of Queen Creek.

Before the scattered farm community was called Queen Creek, it had a different name. The area was known as Rittenhouse because of the railroad spur located near Rittenhouse and Ellsworth roads. People used to flag down the train to get a ride into Phoenix. As the community grew, and the use of the railroad stop diminished, the community changed its name and took on the name Queen Creek.

Today, the Town's General Plan calls for the preservation of the Queen Creek Wash and the Sonoqui Wash as public trails and open space. These washes are usually dry and home to many kinds of birds and wildlife. There might have been a time when the washes and the creeks throughout the valley had more water in them more often than they do today. But early in the 20th Century, a series of dams and reservoirs changed the waterways in the southwest. Today, during the rainy season, and when the dams release water from the reservoirs, the creek beds and washes still do fill up and the water will run, even through the Town of Queen Creek. And in the event of a 100-year flood, the

washes and creeks will be important to keep the floodwater from damaging homes and property.

Heritage Reflects Ties to the Land

Agriculture and the bounty of the land continue to support the foundation upon which Queen Creek plans and builds its future. The fertile valley below the San Tan Mountains offered a safe haven for the early Indian communities and the homesteaders who farmed and ranched along Queen Creek Wash. Citrus, cotton, pecans, vegetables, and other crops still provide for area families, and the wash is a key element in the Town's plan for future recreational trails and open space.

By the time Arizona became a state in 1912, a true community had been formed in Queen Creek. Residents established traditions of neighborliness and rural fun. Some remember street dances, dips in local swimming holes, and sleeping under the stars during the summer. The general store, church, and post office served as community gathering places, a practice still alive today. Many of the Town's founding families still choose Queen Creek as their home. Their names- Ellsworth, Power, Sossaman, Hawes, Combs, and Schnepf- on area roads help keep Queen Creek's

heritage alive. Town dances, picnics, and celebrations remain popular.

The Town's 4th of July celebration evokes fond memories for many residents. In 1946, local farmers Raymond and Thora Schnepf invited family and friends to celebrate the holiday with swimming, barbecue, and fireworks at their home. Raymond flew to Texas to purchase the fireworks, which were unavailable in Arizona. The event was later taken over by other community groups.

Longtime residents also remember the switch at Rittenhouse and Ellsworth roads where they could flag down a train, called a dinky, and hop aboard for a ride into Mesa, Tempe, Phoenix, or Tucson. Nearby, the Ellsworth family built housing for farm workers and a general store where workers used their script pay to shop for goods.

In the 1920s, Queen Creek experienced an influx of immigrants who had moved from Mexico to work as miners in southern Arizona. They picked the local cotton crop by hand until the cotton gin came to Queen Creek during the 1920s. In the 1940s, former German prisoners of war from the P.O.W. camp in Queen Creek and Philippine immigrants joined farm laborers in local fields.

Today Queen Creek is preparing for new additions to its rich cultural diversity. The rapid expansion experienced by nearby cities in the 1980s continues today. The Town of approximately 68,500 citizens faces inevitable growth. Residents seek to preserve the Town's friendly, small-town spirit while providing economic and recreational opportunities and a high quality of life.

Continued on page 8



Continued from page 7

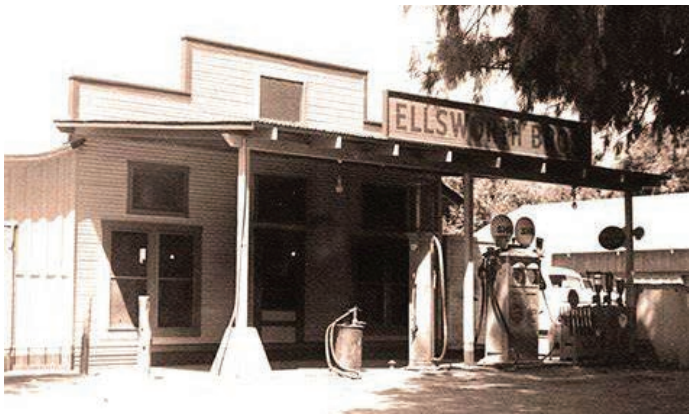
The San Tan Historical Society is dedicated to the preservation, restoration and education related to Chandler Heights, Combs, Higley and Queen Creek history.

Ever wondered how Power, Sossaman, Hawes, and Ellsworth roads got their names? Who was Rittenhouse? Where was the first school? What was Frank Lloyd Wright's connection to the San Tan area? How did the community benefit from the German POWs? Who was the man on the mountain? Who started the Queen Creek Potato Company in 1932?

Find the answers to these questions and more at the San Tan Historical Society Museum. San Tan Historical Society Museum is located on the southeast corner of Queen Creek and Ellsworth Roads in Queen Creek. The museum is open to the public free of charge every Saturday from 9 a.m. to 1 p.m. Everyone is encouraged to take a few minutes to see the new displays, visit with the volunteers and browse the gift shop. Eagle Scout projects are also available.



Faith Sossaman's 2nd grade class at Rittenhouse Elementary School circa 1932.



The San Tan Historical Society is dedicated to the preservation, restoration and education related to Chandler Heights, Combs, Higley and Queen Creek history.



Tours available upon request.

San Tan Historical Society
20425 S. Ellsworth Road
Queen Creek, AZ 85142
480-987-9380

Hours: Free to the public on
Saturdays 9 a.m. - 1 p.m.
santanhistory@yahoo.com



(480) 987-2488 | 22425 East Cloud Rd., Queen Creek, AZ 85142
www.SanTanMemorial.com



Public Perpetual Care Cemetery | Family Owned
Affordable | Advance Planning Options | Serves all Faiths
Interest-free Payment Plans | Veteran Services

Indoor Mausoleum Coming Soon!



**A SIMPLE PHILOSOPHY:
Do the Right Thing.**

"For over 18 years, I've helped clients become financially independent. I look forward to seeing how we can work together to achieve your goals."

Services include: Retirement Plans,
Managed Investments, Mutual Funds,
Annuities, Term Life, Education
Savings, Financial Needs Analysis

(480) 888-5769
bmcclure@primerica.com
primerica.com/bryanmcclure



PRIMERICA®

PFS Investments is a broker-dealer and investment adviser registered with the SEC. Advisory services are offered under the name Primerica Advisors. For information about Primerica Advisors, please request a copy of our Form ADV. Investments contain risk and may lose value. Past performance is not a guarantee of future results. Term life insurance products are underwritten by Primerica Life Insurance Company. Executive Offices: Duluth, Georgia. Securities offered by PFS Investments, Inc. 1 Primerica Parkway Duluth, GA 30099

SITES OF INTEREST

Our Lady of Guadalupe

The first Catholic Church building in Queen Creek is located on the north side of Ocotillo, 3/8 mile west of Ellsworth Road. The two narrow stained glass windows' beauty attracted much attention. They have been removed and placed on display in Our Lady of Guadalupe Church.

Queen Creek Town Hall

The building that currently serves as the Town Hall for Queen Creek began as a Church of Jesus Christ of Latter-day Saints. It held its first service on Mother's Day, Sunday, May 13, 1951. The stained-glass windows in the Town Council Chamber make this Town Hall very unique.

Desert Wells Stage Stop

Located just north of Chandler Heights Road on the east side of Sossaman Road, this site is reported to have been a small spur stop for the Arizona Stage Company, founded in 1868. The stop provided water, shade, and

protection for stages from Florence via Olberg and on to Mesa.

Gold Mine

A short hike from the south end of Ellsworth Road will take you to the entrance of what used to be a 200-foot tunnel, now sealed for safety. The Gold Mine Mountain area was the site of many mining claims, including one by a Mr. Ebert from Mesa. Midway through the tunnel, Mr. Ebert reportedly found a gold vein that was 6-8 feet long. By the time equipment arrived to mine the gold, the vein had shifted to a fault line that could not be located again.

Mansel Carter & Marion Kennedy Gravesite

Mansel came to the Queen Creek area in 1948 with his prospecting buddy, Marion. They set up camp about 5 miles south of town in what is currently San Tan Mountain Regional Park. They never struck it rich, but they lived the life they wanted. Mr. Kennedy passed away in 1960,

and Mansel buried him near their camp. Mr. Carter was buried next to his friend in 1987.

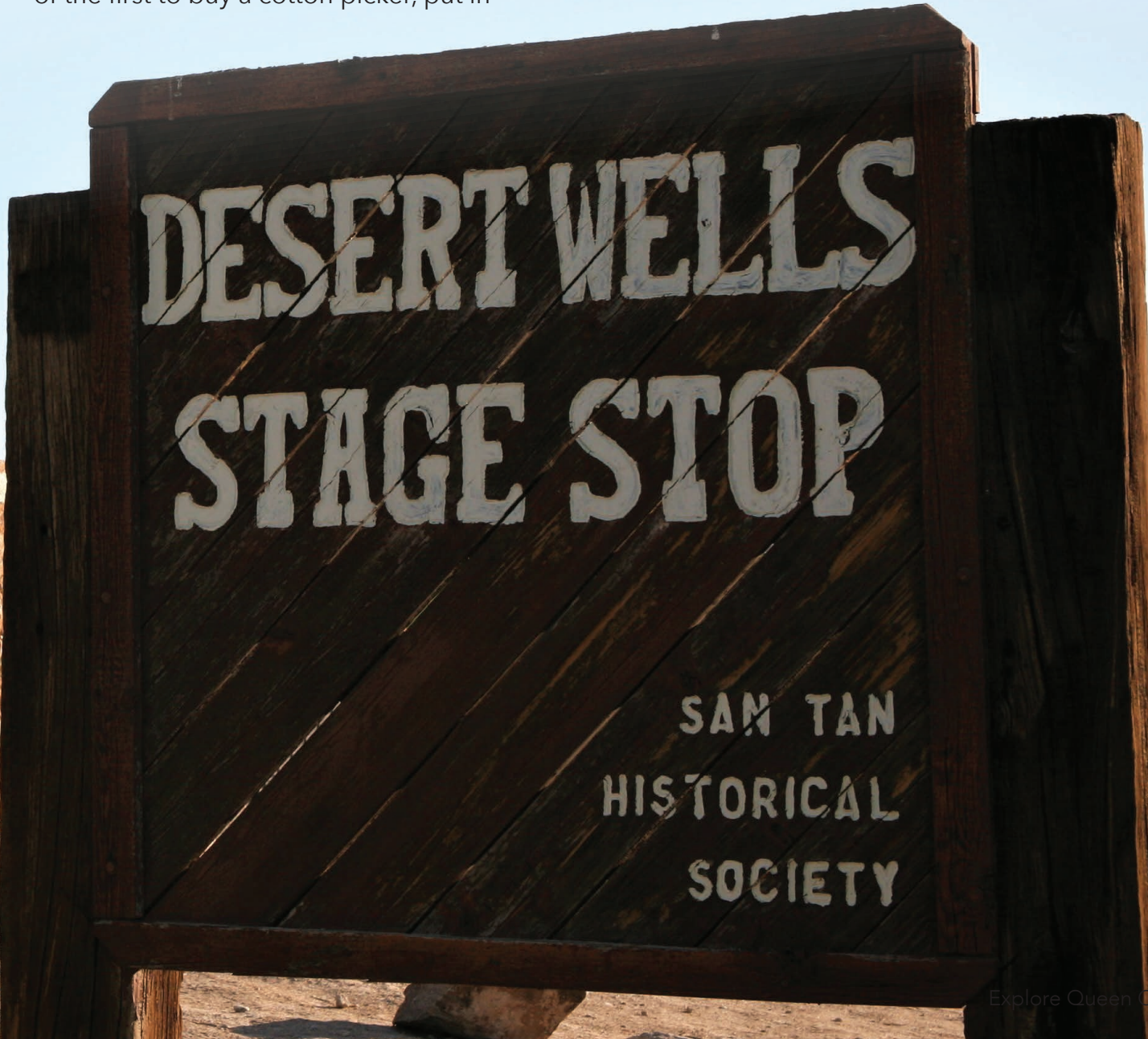
Schnepf Farms

Located five miles southeast of town, the area was purchased by Jack and Maude Schnepf in 1941. Their oldest son Raymond and his wife Thora were newly married, and they moved to what was called "the home place," while the rest of the family continued to live in Mesa.

By 1945 most of the family members were living on the farm. They were some of the first to buy a cotton picker, put in

cement ditches and dig sumps to catch and recycle wastewater. Jack and Raymond invented and manufactured the aluminum irrigation tube.

Schnepf Farms is well known today for its family-oriented events and celebrations. If you have an opportunity, visit the Country Store.



LANDMARKS

01 **POW CAMP**

During World War II, a prisoner of war (POW) camp was established on the north side of the railroad from 1942 to 1945. German POWs were used for farm labor, and a doctor at the camp was known to have occasionally treated local residents.



02 **ELLSWORTH BROTHERS FARMS**

In 1928, the Rittenhouse property was sold to Leo Ellsworth, who lived on the north side of Ocotillo Road. He and his brothers formed The Ellsworth Brothers Farms, an operation that soon consisted of cotton, large acreages of farm produce, cattle, sheep, and a dairy herd. Leo is credited with bringing in the first phone line to Queen Creek. The Ellsworth Store was located on the southwest corner of Ellsworth and Ocotillo roads.



03 **HAWES HOMESTEAD**

Ernest E. Hawes started farming in Queen Creek in the 1930s. The original homestead was on the south side of Chandler Heights Road, north of the Sonoqui Wash, just west of what is now Hawes Road. An old adobe house still stands on the property.



04 **POWER FARMS**

In 1917, J.O. Power moved to the Queen Creek area with his brother, Bernard (Buck). The homestead consisted of 320 acres and was located a half mile west of Sossaman Road on Ocotillo. More land was purchased on the west side of Power Road and a new home was built in 1938.



05 **SOSSAMAN HOMESTEAD**

Jasper Sossaman, his mother, and his brother Lee moved to the homestead in 1919 after his father died. It consisted of 320 acres on what is now the Southwest corner of Sossaman and Ocotillo Roads. Jasper (Jap) began working for Charlie Rittenhouse, operating and maintaining the diesel engines that powered the pumps used to irrigate Queen Creek Farms.



06 **GERMANN HOMESTEAD**

In 1914, everyone but John and Mathilda Germann knew that it was impossible to farm on the desert of Arizona. The Germanns purchased a relinquishment of 480 acres from a discouraged homesteader and established their home and pumping plant. Ivan Cluff purchased the Germann property in 1947 and formed a partnership with Stan Turley to farm the land.



07 **RITTENHOUSE RANCH**

By 1924, the Queen Creek Farms Company was well established. The Rittenhouse wells typically pumped 2,150 gallons of water per minute and were 400 feet deep. The availability of water made Charles Rittenhouse's 1,000 acres of farmland very productive.



08 **POZOS DE SONOQUI**

The Hohokam lived in small villages, using irrigation to raise crops of corn, bean, and cotton until around AD 1450. Excavation of the Pozos de Sonoqui site uncovered a number of pit houses, artifacts and other features of significance.



DeBellevue Global
Your Social Media. Handled.

Leanna DeBellevue is an international speaker, global marketing agency owner, social media strategist and co-author of the Amazon International bestseller, *Light At The End Of The Funnel*, a practical guide for business owners who are ready to step into success.

She has helped clients from over 19 countries generate millions of dollars in sales using social media to connect and engage with their target markets. The companies she has worked with range from global conglomerates to real estate moguls and individual business owners looking to reach new untapped markets.

Leanna has spoken in front of thousands of entrepreneurs, business leaders and decision-makers from over 13 countries on topics ranging from overcoming success blockers to implementing social media strategies and business growth hacks. She has written for HuffPost and was a guest speaker on podcasts by Iheartradio, Real Estate, and Health Coach Academy among several others. She is also a 2020-2021 Council Member for Forbes Magazine.



DeBellevue Global

Headquartered in Queen Creek

DeBellevue Global was founded on the fundamental belief that small business is the heartbeat of America and is what highlights the tenacity and resilience of the American people. That said, a business owner can be the best in their industry but if they do not know how to get in front of the people who can use their services, they are unable to survive. It is our mission to act as a bridge between the people to provide services and the people who need them. We create messages that resonate with our clients target audience.

We provide a resource for businesses that are falling flat on social media. We handle all aspects of social media for our clients and help them grow in an organic and sustainable way. We believe that it is a slow and steady relationship building process that ultimately builds the best brand recognition, and brand loyalty.

Our company creates the content,

schedules the content, responds to basic inquiries all while matching your brand voice. We ask our clients what their definition of success is on social media, then we take that definition and create a road map to get us there. Each plan is individualized.

While we have clients in over 19 countries at any given time, it is our local clients that I find the most joy in working with as I feel like as a company, we are giving back to our local community, thriving together. Our clients range from the solopreneur to some of the largest corporations in the country. If you know who you serve, know why you serve them and are purpose-driven, we can help!

When done correctly, social media is a great way to build lasting relationships with your audience in a way that is predictable and scalable. If you are tired of being the best kept secret, reach out to us and let's see if we can help!



970.640.3314
debelleueglobal.com

AGRITAINMENT

Agritainment is the combination of agriculture and entertainment.

HAYDEN FLOUR MILL AT SOSSAMAN FARMS **22100 S. SOSSAMAN ROAD** **(480) 557-0031**

Taste Arizona history at Hayden Flour Mills, a family-owned flour mill focused on native seeds and growing hand cultivated heritage grains with minimal processing. Sossaman Farms has been growing wheat for more than 100 years in Queen Creek and visitors can enjoy a full-sensory culinary experience that starts with a tour of their milling operation. Hayden Flour Mills showcases flavorful grain and its importance to the American diet highlighting everything from artisan breads, pasta and wheat berries to Bourbon, craft brews, grain-based oils and more. Retail store inside.

OLIVE MILL **25062 S. MERIDIAN ROAD** **(480) 888-9290**

Arizona's only family-owned and operated working olive mill and farm, where olives are grown and pressed for the production of high-quality extra virgin olive oil. Experience their Olive Oil 101 class (offered hourly) and enjoy complimentary tastings of oils, olives, and vinegars. Visitors are invited to dine at the Mill's Tuscan-inspired eatery featuring fresh gourmet sandwiches, paninis as well as soups, salads, gelato, and fresh roasted espresso from Infusion Coffee. Relax in their olive grove with libations at The Pit, featuring specialties from the grill.

QUEEN CREEK BOTANICAL GARDENS **25002 S. 206TH STREET** **(480) 704-4100**

The Queen Creek Botanical Gardens inspire and educate about elegant edible plants, showing the future of sustainable food production in landscaping. The 10-acre Gardens feature the only fully-operational industrial-age water mill in the American Southwest, and themed gardens. The Gardens provide a place to escape, enjoy the beauty of nature, and learn more about food security through community resources. Fruits, vegetables, and other food produced at the Gardens will be available for purchase at the gift shop, or through a weekly produce-subscription service.

SCHNEPF FARMS **24810 S. RITTENHOUSE ROAD** **(480) 987-3100**

This fourth-generation family farm is the largest organic peach grower in Arizona and a must-do in the Phoenix area. If planning a day trip, make sure to visit the website and see what's happening that week on the farm. Guests may be able to

experience everything from peach picking to watching a historical re-enactment, enjoying a classic car show or an antique craft fair, fireworks, one of the unique seasonal farm festivals, ice skating, or just picking veggies in the u-pick garden. Designated an Arizona Treasure by the Governor, Schnepf Farms is open 10 months a year (closed July 5 through Labor Day). Seasonal events include the Pumpkin & Chili Party (October), Winter Wonderland (December), the Peach Blossom Festival (February), Dinner Down the Orchard (Spring), Easter Egg-citement, and the 4th of July Fireworks Celebration

THE PORK SHOP **3359 E. COMBS ROAD** **(480) 987-0101**

The Pork Shop is home to the best pork in the country. From fresh cuts of pork to seven types of smoked bacon, this third-generation farm also sells a collection of fresh sausages, snack sticks, lunch meats and more. Their gourmet sausages include green chili, potato, beer brats, andouille, and jalapeno flavors - as well as a line of cheese sausages and brats.

SERVICES & HEALTH

HOSPITALS

BANNER IRONWOOD MEDICAL CENTER

37000 N Gantzel Rd.
Queen Creek, AZ 85140
(480) 394-4000
bannerhealth.com

DIGNITY HEALTH ARIZONA GENERAL HOSPITAL

1419 W Hunt Hwy,
San Tan Valley, AZ 85143
(480) 245-4300
dignityhealth.org

DIGNITY HEALTH - ARIZONA GENERAL HOSPITAL MESA

9130 E Elliot Rd, Mesa, AZ 85212
(480) 410-4500
dignityhealth.org

MERCY GILBERT MEDICAL CENTER

3555 S. Val Vista Dr., Gilbert, AZ 85297
(480) 728-8000

PRIMARY CARE

BANNER HEALTH CENTER QUEEN CREEK

21772 S Ellsworth Loop, Queen
Creek, AZ 85142
(480) 512-3700

BANNER HEALTH CLINIC AT BANNER IRONWOOD CAMPUS

37000 N Gantzel Rd, Ste. 201,
Queen Creek, AZ 85142
(480) 394-4469
Bannerhealth.com

URGENT CARES

BANNER URGENT CARE

35945 N Gary Rd,
San Tan Valley, AZ 85143

BANNER URGENT CARE

40773 N Ironwood Drive

San Tan Valley, AZ 85140
(480) 827-5760

DIGNITY HEALTH URGENT CARE

7205 S. Power Rd.
Queen Creek, AZ 85142
(480) 728-6000

FIRE SERVICES

FIRE STATION 1

20678 E. Civic Parkway
Queen Creek, AZ 85142

FIRE STATION 2

24787 S. Sossaman Rd
Queen Creek, AZ 85142

FIRE STATION 3

19159 E. Queen Creek Rd
Queen Creek, AZ 85142

FIRE STATION 4

20155 S. Signal Butte Rd
Queen Creek, AZ 85142

INTERIM FIRE STATION 5

980 W. Combs Rd, Queen Creek, AZ 85142
(permanent Fire Station 5, located at 245
W. Combs Rd - under construction)

POLICE SERVICES

Maricopa County Sheriff
Office continues to provide
law enforcement services to
Queen Creek. Queen Creek
Police Department will take
full service in January 2022.

MCSO DISTRICT 6 - QUEEN CREEK SUBSTATION

20727 E. Civic Parkway
Queen Creek, AZ 85142
Lobby Hours: 8 a.m. - 5 p.m.; Mon.-Fri.

EMERGENCY: 9-1-1

Non-Emergency: 602-876-1011



QUICK FACTS

YEAR INCORPORATED 1989

POPULATION 68,500
(estimate as of June 30, 2021)

MEDIAN HOME VALUE \$350,700
(source: Maricopa County Assessor's)

MEDIAN INCOME \$105,729
(source: U.S. Census Bureau, American Community Survey,
latest 1 year estimate)

MEDIAN AGE 34.1

AVERAGE HOUSEHOLD SIZE 3.49

ANNUAL DAYS OF SUNSHINE 330

PLANNING AREA 72 square miles

ELEVATION 1,400 feet

ANNUAL AVERAGE RAINFALL 9.8 inches

AVERAGE TEMPERATURES (High/Low Fahrenheit)
..... January 66°/40°
..... April 85°/55°
..... July 107°/82°
..... October 92°/61°

Have a Bachelor's Degree or Higher 37.7%

QUEEN CREEK OLIVE MILL

What started in 1998 as an experiment to see how well olives could thrive in the Sonoran Desert has now grown into the Queen Creek Olive Mill, an agri-tourism destination where travelers come from around the world to learn about the production of extra virgin olive oil (EVOO) and its benefits. Olive Oil 101 Classes begin daily in the grove where visitors learn why olive trees thrive so well in our micro-climate. Two eateries, del Piero Kitchen and Di Oliva Italian Bistro, use garden-sourced and premium, Italian ingredients to create menus inspired by old-world family recipes. Guests tend to taste their way through the gourmet marketplace where they find a selection of extra virgin olive oils, balsamic vinegar, and other culinary treasures that have been specially curated by the Mill's Olive Oil Sommelier, Perry Rea. Peek into the OliveSpa lab where you'll see all-natural and EVOO-based skincare products being crafted that you can test and try right on site. Or, become a coffee connoisseur with Infusion Coffee & Tea Crafters, a team of educators delivering world-class coffee and tea experiences, from seed to cup, every day at the Mill. With so much to taste, test, and experience, you'll discover a world of flavor at the Queen Creek Olive Mill.



QUEEN CREEK OLIVE MILL ARIZONA



WELCOME TO THE NEIGHBORHOOD!

FARM • MARKET • EATERY

QUEEN CREEK OLIVE MILL
25062 SOUTH MERIDIAN ROAD QUEEN CREEK, ARIZONA 85142

MARKETPLACE AT KIERLAND COMMONS
7122 EAST GREENWAY PKWY #120 SCOTTSDALE, ARIZONA, 85254

WWW.QUEENCREEKOLIVEMILL.COM



DRIZZLE YOUR INBOX
WITH OLIVE OIL

SHOPPING & DINING

SHOPPING & DINING



- 01 **Queen Creek Marketplace**
(SWC Ellsworth Loop and Rittenhouse Rd)
- 02 **QC District**
(SEC Ellsworth Loop and Rittenhouse Rd)
- 03 **QC Fiesta**
(SEC Ellsworth Loop and Maya Rd)
- 04 **Queen Creek Crossroads and Heritage Square**
(SEC of Ellsworth & Rittenhouse Rd)
- 05 **Ironwood Safeway Center**
(NWC Ironwood and Ocotillo Rd)
- 06 **Shops at Terravella**
(NEC Queen Creek and Ellsworth Rd)
- 07 **Cornerstone**
(NEC and NWC Rittenhouse and Ocotillo Rd)
- 08 **Basha's Plaza**
(SWC Power and Chandler Heights Rd)
- 09 **Power Marketplace II**
(NEC and SEC of Power and Rittenhouse Rd)
- 10 **Queen Creek Village Center**
(NEC of Ellsworth and Ocotillo Rd)
- 11 **Queen Creek Station**
(NEC of Ellsworth and Walnut Rd)

THINGS TO DO

- 01 **Desert Mountain Park**
22201 S. Hawes Rd., Queen Creek, AZ 85142
7 a.m. - 10 p.m.
- 02 **Founders' Park**
22407 S. Ellsworth Rd., Queen Creek, AZ 85142
7 a.m. - 10 p.m.
- 03 **Skate Park**
22407 S. Ellsworth Rd., Queen Creek, AZ 85142
7 a.m. - 9:30 p.m.
- 04 **Splash Pad at Founders' Park**
March, April, Sept, Oct: 10 a.m. - 6 p.m.
May-August: 9 a.m. - 7 p.m.
Nov-Feb: Closed
22407 S. Ellsworth Rd., Queen Creek, AZ 85142
- 05 **Mansel Carter Oasis Park**
7 a.m. - 10 p.m.
Lake at Mansel Park: 7 a.m. - 10 p.m.
19535 E. Appleby Rd., Queen Creek, AZ 85142
- 06 **Splash Pad at Mansel Park**
7 a.m. - 9:30 p.m.
Wheel Friendly Plaza: 7 a.m. - 9:30 p.m.
19535 E. Appleby Rd., Queen Creek, AZ 85142
- 07 **Pocket Park for Pups**
22526 S. Ellsworth Rd., Queen Creek, AZ 85142
Mon, Wed-Sun: 7 a.m. - 10 p.m.
Tues: CLOSED
- 08 **Wash Trails**
S. Power Rd. and East Village Loop Rd. West of 215 St.
Sunrise to Sunset
- 09 **San Tan Mountain Regional Park**
6533 W. Phillips Rd., Queen Creek, AZ 85142
Sun-Thurs: 6 a.m. - 8 p.m.
Fri-Sat: 6 a.m. - 10 p.m.
- 10 **Horseshoe Park & Equestrian Centre**
20464 E. Riggs Rd., Queen Creek, AZ 85142
8 a.m. - 10 p.m.





Where to Find More Info

www.explorequeencreek.org

www.queencreekchamber.com

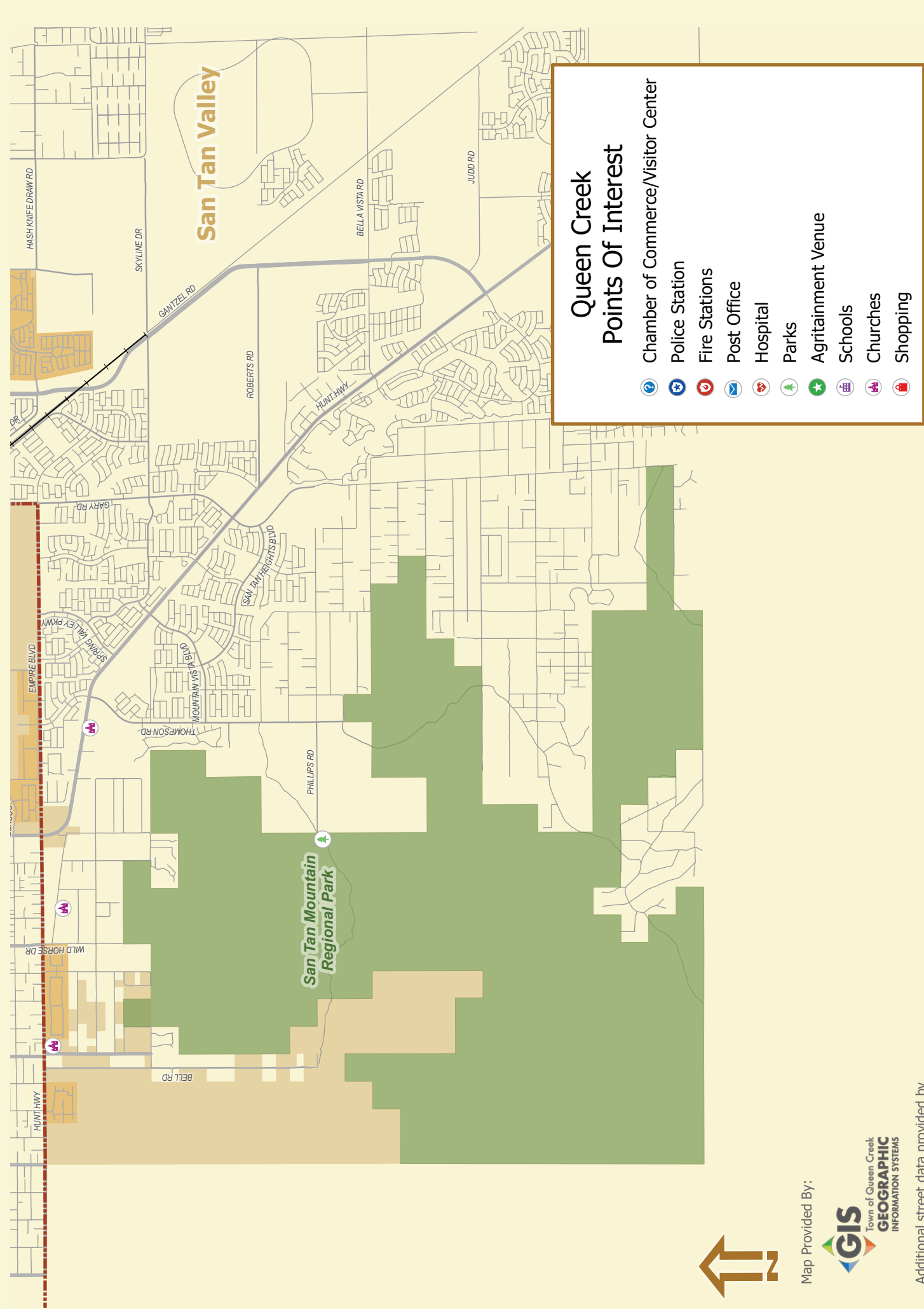
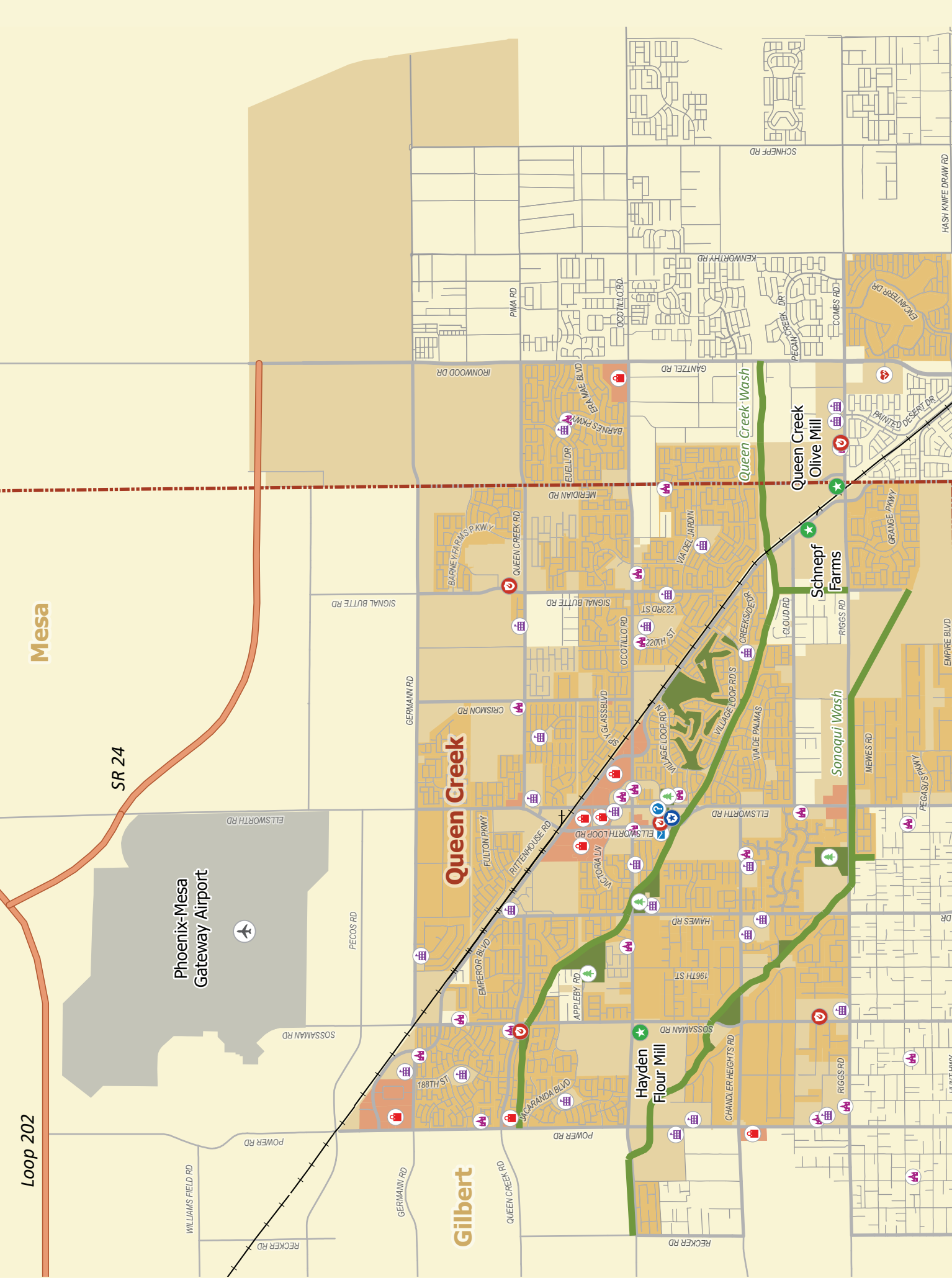
www.queencreekaz.gov



Queen Creek
CHAMBER OF COMMERCE

2021

QUEEN CREEK MAP



Map Provided By:



Additional street data provided by Maricopa and Pinal Counties.

Come, Stay and Enjoy!

Ellsworth Loop Rd



Pull Out Map Inside



Queen Creek
CHAMBER OF COMMERCE

PROUD TO SUPPORT
The Chamber of Commerce and Queen Creek Community



Got Weeds?

**NO MONTHLY CONTRACTS,
JUST GREAT SERVICE!**

FREE ESTIMATES
5 STAR GOOGLE RATING
PRE-EMERGENT COMES WITH WARRANTY
RESIDENTIAL & COMMERCIAL

SERVING THE EAST VALLEY
CALL OR TEXT TODAY!

480-900-5580

EVWEEDS.COM
EVWEEDS@GMAIL.COM



EAST VALLEY
WEED CONTROL

Welcome to

*Learn more about your
community and take part in
conversations about what's
happening in Town
by following:*

- @QueenCreek
- @TownofQC
- /TheQCCchannel
- @TownofQueenCreek

QUEEN CREEK

Find information about Queen Creek and to sign up for traffic alerts, news releases and more,
visit QueenCreekAZ.gov



Banner Ironwood Medical Center, part of the nonprofit Banner Health, is a community hospital boasting neighborhood convenience and friendliness while leveraging the clinical expertise and innovation of one of the country's leading health systems. This state-of-the-art facility cares for patients through all phases of life, offering;

- Emergency & Trauma Care (Level IV)
- Women's Health, Maternity & Midwifery Care, Obstetrics/ Gynecological Services
- Orthopedics/Sports Medicine
- Surgical Care including Robotic Surgery
- Digestive Health/Gastroenterology
- Men's Health- Urological Care
- Pediatric & Child Life Services

Located at the intersection of Gantzel and Combs roads in Queen Creek, Banner Ironwood is a regional health care provider serving the greater Queen Creek, San Tan Valley and Florence areas. It is fully integrated with and complemented by the nationally recognized Banner Medical Group, which places primary care and specialist physicians in conveniently located Banner Health Clinics and Centers. Furthermore, two Banner Urgent Care locations in San Tan Valley serve patients whose health concerns require immediate medical attention, but don't necessitate a more costly trip to the Emergency department.

**Banner Ironwood
Medical Center**

37000 North Gantzel Road
Queen Creek, AZ 85140
480-394-4000

BannerHealth.com



Inpatient Pediatric Unit

Banner Ironwood Medical Center's (BIMC) Pediatric Inpatient Unit provides care close to home. Staffed with Banner Children's physicians and pediatric-trained care team members, we're here to meet the unique needs of children and their families. Our specialized Pediatric Inpatient Unit enables your child to receive the care needed in a hospital that is part of your community and close to home.

Committed to family-centered care, BIMC's Pediatric Inpatient Unit offers:

- Pediatric-trained physicians, advanced practitioners, nurses and patient care technicians
- Certified child life specialists
- Child-friendly private rooms
- Family lounge
- Pediatric-prepared emergency department (ED)
- Playroom and treatment room
- Specialized care for the unique needs of children

BIMC's Pediatric Inpatient Unit is here to serve the growing needs of families in the community. Banner Ironwood is affiliated with Banner Children's at Desert, where more advanced pediatric care will be provided for patients and families in the East Valley, if needed.

 **Banner Health.**
Ironwood Medical Center

37000 N. Gantzel Rd.
Queen Creek, AZ 85140

Phone: (480) 394-4459

More Information:
BannerHealth.com



Horseshoe Park and Equestrian Centre

is a 38-acre equestrian facility here in Queen Creek. With about 150 shows per year, this spectacular park has been a great place to host events for almost 30 years. Featuring beautiful scenery, and a free community riding arena, it provides ample opportunity for equestrian events, as well as home shows, RV and car shows, concerts and weddings. The park is home to several prestigious organizations and events, including Arizona Cutting Horse Association, Arizona Quarter Horse Association, Arizona Thoroughbred Breeders Association, Art of the Cowgirl, Champagne Dressage Show, Cisco Productions, Cowboy Mounted Shooting Association, Roots N Boots Queen Creek, Southern Arizona Quarter Horse Association, and Vintage and Vino. For more information or to make a reservation, call (480) 358-3793.

OCTOBER

VINTAGE AND VINO

This shopping showcase features one of a kind finds, treasures, local vendors, make-and-takes and more. Learn a few things from painting and décor pros and enjoy live acoustic music as you sip on a mimosa, glass of wine, craft beer, or a non-alcoholic beverage.

OCTOBER

HEART CRY COWBOY CHURCH FALL FESTIVAL

Free family event presented by Heart Cry Church. No cost to attend.

NOVEMBER

ARIZONA CUTTING HORSE ASSOCIATION

Between October and May, the AZCHA hosts six different four to five-day events showcasing the best NCHA sanctioning cutting in the western United States.

JANUARY

ART OF THE COWGIRL

A gathering to celebrate cowgirls and their contributions to western lifestyle and culture and to raise funds to support up-and-coming artists to expand their knowledge and skills via fellowships with master artists in their field.

MARCH

ROOTS AND BOOTS QUEEN CREEK

Roots N' Boots Queen Creek is an annual event celebrating QC's rural heritage. Events and activities include PRCA Rodeo, bull riding, rodeo dance Friday and Saturday nights, carnival, Kids N' Kritters, Ranch Dressing, Extreme Teen, vendors, petting zoo, pony rides, and lots of free fun for the entire family.



COMMUNITY EVENTS

SEPTEMBER **FOUNDERS DAY**

Come celebrate Queen Creek's heritage at this family-friendly community event in Founders' Park! Take part in competitions, enjoy great food, music, and entertainment, and experience a Battle of the Badge competition.

OCTOBER **TRUNK OR TREAT**

Trunk or Treat provides a safe environment for families to enjoy an inexpensive evening of Halloween fun in a festival atmosphere! Children trick-or-treat by going from car trunk to car trunk on "Trunk or Treat Street" to get their bag filled with goodies.

NOVEMBER **PANCAKE BREAKFAST**

Residents are invited to "wake up to what's cooking in Town" from 10AM-noon in the Town Hall Courtyard outside of Town Hall, 22350 S. Ellsworth Road. During this two-hour community event, residents enjoy freshly made pancakes, meet their neighbors, have the opportunity to speak directly with Town Council and Town staff and spend time visiting our Touch-a-Truck area for an up-close look at the vehicles seen throughout the community.

DECEMBER **KIDS' CHRISTMAS CAR SHOW AND TOY DRIVE**

Celebrate the holiday season at this classic car show and toy drive to benefit less fortunate children with toys for Christmas hosted by the Kiwanis Club of Queen Creek.

DECEMBER **QUEEN CREEK HOLIDAY FESTIVAL & PARADE**

Come join the festivities including a parade, tree lighting ceremony, rides and attractions, food and craft vendors, as well as an appearance by Santa Claus himself! Hosted by the Queen Creek Chamber of Commerce and Kiwanis Club of Queen Creek on the first Saturday of December

MARCH **SPRING INTO QC**

Hop on over to Spring into QC! This signature event celebrates the Queen Creek families and is complete with live entertainment and the always popular egg hunt. There's fun for everyone!

For exact dates and more information visit explorequeencreek.com

PRIMARY AND SECONDARY EDUCATION:

QUEEN CREEK UNIFIED SCHOOL DISTRICT

(480) 987-5935
qcusd.org

AMERICAN LEADERSHIP ACADEMY

(480) 420-2150
alaschools.org

BENJAMIN FRANKLIN CHARTER

(480) 987- 0722
bfcsaz.com

CAMBRIDGE ACADEMY

(480) 987-3577

EAST VALLEY INSTITUTE OF TECHNOLOGY

(480) 461-4000
evit.com

HERITAGE ACADEMY GATEWAY

(480) 461-4400

CHANDLER UNIFIED SCHOOL DISTRICT

Cusd80.com
(480) 812-7000

J.O. COMBS UNIFIED SCHOOL DISTRICT

Jocombs.org
(480) 987-5300

HIGLEY UNIFIED SCHOOL DISTRICT

Husd.org
(480) 279-7000

COMBS HIGH SCHOOL

HIGHER EDUCATION

ARIZONA STATE UNIVERSITY

525 E. University Dr.,
Tempe, AZ 85281
(480) 965-2100

CENTRAL ARIZONA COLLEGE

8470 N. Overfield Rd.,
Coolidge, AZ 85128
(520) 494-6400

CHANDLER-GILBERT COMMUNITY COLLEGE

2626 E. Pecos Rd.,
Chandler, AZ 85225-2499
Phone: (480) 732-7000

COMMUNIVERSITY @ QUEEN CREEK

21740 S. Ellsworth Rd.,
Queen Creek, AZ 85142
Phone: (480) 384-9971



PLACES OF WORSHIP

SUN VALLEY COMMUNITY CHURCH - QUEEN CREEK

20271 E. Rittenhouse Rd.,
Queen Creek, AZ 85142
Phone: (480) 508-4700

AMADEO CHURCH

21805 S. Ellsworth Rd. Ste.
#102, Queen Creek, AZ 85142
Phone: (480) 882-1177

FAMILY OF FAITH FELLOWSHIP

20913 E. Ocotillo Rd., Queen
Creek, AZ 85142
Phone: (480) 987-3991

GATEWAY CHURCH OF CHRIST

22705 S. Ellsworth Rd., Queen
Creek, AZ 85142
Phone: (480) 497-6125

ROCK POINT CHURCH

24759 S. Power Rd., Queen
Creek, AZ 85142
Phone: (480) 988-5391

OUR LADY OF GUADALUPE CATHOLIC CHURCH

20615 E. Ocotillo Rd., Queen
Creek, AZ 85242
Phone: (480) 987-0315

CALVARY CHAPEL

19248 E. San Tan Blvd., Queen
Creek, AZ 85142
Phone: (480) 988-2984

SONG OF LIFE UNITED METHODIST CHURCH

20164 S. Sossaman Rd., Queen
Creek, AZ 85142
Phone: (480) 641-1200

CENTRAL CHRISTIAN

Queen Creek
22505 E. Ocotillo Rd., Queen
Creek, AZ 85142
Phone: (480) 722-2200

HEART CRY CHURCH

9339 W. Hunt Hwy, Queen
Creek, AZ 85142
Phone: (480) 784-3825

MOUNTAIN VIEW CHURCH

4815 W. Hunt Hwy, Queen
Creek, AZ 85142
Phone: (480) 677-2100

THE CHURCH OF JESUS CHRIST OF LATTER-DAY SAINTS

22035 E. Ocotillo Rd., Queen
Creek, AZ 85242
Phone: (480) 888-1813

BUSINESS DIRECTORY

AGRICULTURE

SOSSAMAN FARMS

(480) 987-9670
22200 S. Sossaman Rd.
Queen Creek AZ 85142

AIR CONDITIONING/HEATING

ANGEL AIR COOLING & HEATING, LLC

(480) 298-0353
20427 E. Ocotillo Rd.
Queen Creek AZ 85142
www.angelaircooling.com



STERLING SERVICES

(480) 788-1515
7256 S. 89th Place, Ste. 103
Mesa AZ 85212
www.renewair.biz



AIRPORT

PHOENIX-MESA GATEWAY AIRPORT

(480) 988-7618
5835 S. Sossaman Rd.
Mesa AZ 85212
www.phxmesagateway.org



AUTOMOBILE REPAIRS AND SERVICE

CHRISTIAN BROTHERS AUTOMOTIVE

(480) 783-3022
21143 E. Rittenhouse Rd.
Queen Creek AZ 85142
locations.cbac.com/queen-creek

ROADRUNNER COLLISION CENTER

(480) 882-2949
7361 S. 89th Place
Mesa AZ 85212
www.rccphx.com

SAN TAN AUTO BODY

(480) 988-1598
18415 E. San Tan Blvd
Queen Creek AZ 85142
www.santanautobodyaz.com

AWARDS

AWARD PROS

(480) 335-3819
18914 E. San Tan Blvd, Ste 124
Queen Creek AZ 85142
www.awardpro.net

BANKS, CREDIT UNIONS, SAVINGS AND LOANS

BANK OF AMERICA

(815) 276-5278
8463 S Power Rd
Queen Creek AZ 85142
www.bankofamerica.com

BMO HARRIS BANK

(480) 882-3000
21479 S. Ellsworth Rd.
Queen Creek AZ 85142
www.bmoharris.com

GATEWAY BANK

(480) 250-4353
6860 E Warner Rd
Mesa Arizona 85212
gcbaz.com



GUILD MORTGAGE

Ronald Valerio
(480) 710-7395
1530 E Williams Field Rd, Ste 206
Gilbert AZ 85295
branches.guildmortgage.com/az/gilbert/ronald-valerio-424-evrv.html

MOUNTAIN AMERICA CREDIT UNION

(480) 862-4892
22024 S. Ellsworth Loop Rd.
Queen Creek AZ 85142
www.macu.com



NATIONAL BANK OF ARIZONA

(970) 799-2298
1400 E. Southern Avenue
Tempe AZ 85282
www.nbarizona.com

PINAL COUNTY FEDERAL CREDIT UNION

(520) 381-3120
3125 W. Hunt Hwy, Ste 105
San Tan Valley AZ 85142
www.pinalcountyfcu.com

UNISON BANK

(480) 396-1284
1835 E. Pecos Rd.
Gilbert AZ 85295
www.unisonbank.com

WALLICK & VOLK MORTGAGE

The Neal Team
(480) 516-6236
stacyneal.wvmbmesa.com

**CABLE AND INTERNET PROVIDERS****MEDIACOM COMMUNICATIONS CORP.**

(707) 267-6068
1435 E Old West Highway
Apache Junction AZ 85119
www.mediacomcable.com

CAR DEALERSHIPS**EARNHARDT RODEO CHRYSLER DODGE JEEP RAM**

(480) 666-3703
35747 N Ellsworth Road
Queen Creek AZ 85142
www.rodeocdj.com

SAN TAN FORD

(480) 821-3200
1429 E. Motorplex Loop
Gilbert AZ 85297
www.santanford.com

**CAR WASH****COBBLESTONE AUTO SPA**

(602) 616-8852
38110 North Gantzel Road
San Tan Valley AZ 85140
cobblestone.com

CEMETERIES**SAN TAN MEMORIAL GARDENS AT SCHNEPP FARMS**

(480) 987-2488
22425 E. Cloud Rd.
Queen Creek AZ 85142
santanmemorial.com

CHIROPRACTORS**BACKFIT HEALTH + SPINE**

(480) 329-3236
21323 S. Ellsworth Loop Rd., Ste #101
Queen Creek AZ 85142
www.backfithealth.com

CHIOTRENDZ FAMILY CHIROPRACTIC

(480) 999-4700
18610 E. Rittenhouse Rd., A101
Queen Creek AZ 85142
www.chiotrendz.com

CHURCHES**MOUNTAIN VIEW CHURCH**

(480) 677-2100
4815 W. Hunt Hwy
Queen Creek AZ 85142
mv.church

**SONG OF LIFE UNITED METHODIST CHURCH**

(480) 641-1200
20164 S. Sossaman Rd.
Queen Creek AZ 85142
www.songoflifeumc.org

ST. MICHAEL THE ARCHANGEL CATHOLIC CHURCH

(520) 723-6570
26035 Apollo Dr.
Florence AZ 85132
www.stmichaels77.org

THE CHURCH OF JESUS CHRIST OF LATTER DAY SAINTS

801-471-7947
www.churchofjesuschrist.org

COMMERCIAL CLEANING SERVICES**ELDORADO CLEANING LLC**

(480) 737-4324
eldoradocleaningllc.com

CONSTRUCTION SERVICES**ADOLFSON & PETERSON CONSTRUCTION**

(480) 313-0977
5002 S. Ash Ave
Tempe Arizona 85285
www.a-p.com

**AZ WALKWAY MANAGEMENT GROUP OF AZ**

(480) 454-8644
walkwayaz.com

COMPLETE FIRE PROTECTION INC.

(480) 987-8200
19415 E. Germann Rd.
Mesa AZ 85212
completefireaz.com

CORE CONSTRUCTION, INC.

(602) 494-0800
3036 E. Greenway Rd.
Phoenix AZ 85032
www.coreconstruction.com

JP CONSTRUCTION & ESTIMATING SERVICES

(602) 552-9979
www.jpconstructionaz.com

THE EDGE REMODELING

(480) 329-4839
theedgeremodeling.com

COSMETICS**SHEA BLADES AND BEAUTY**

(602) 247-0695
2212 E Williams Field Rd., Ste 200
Gilbert AZ 85295
sheabladesandbeauty.com

DENTISTS**DENTAL CARE AT TUMBLEWEED PASS**

(480) 999-4484
20311 South Ellsworth Road, Ste 101
Queen Creek Arizona 85142
dentalcareattumbleweedpass.com

DESERT CREEK DENTAL

(480) 861-0023
20261 E Ocotillo Rd, Ste 120
Queen Creek AZ 85142
www.desertcreekdental.com

DUCT CLEANING**RENEW AIR**

(480) 988-0958
7256 S. 89th Place, Ste 103
Mesa AZ 85212
www.SterlingAir.us

EDUCATION**ARIZONA STATE UNIVERSITY**

(480) 727-1140
6027 S. Sagewood St.
Mesa AZ 85212
www.poly.asu.edu

**CENTRAL ARIZONA COLLEGE**

(520) 494-5485
3736 E. Bella Vista Rd.
San Tan Valley AZ 85143
www.centralaz.edu

**CHANDLER-GILBERT COMMUNITY COLLEGE (CGCC)**

(480) 732-7075
2626 E. Pecos Rd.
Chandler AZ 85225
www.cgc.maricopa.edu

COMMUNIVERSITY AT QUEEN CREEK

(480) 384-4191
21740 S. Ellsworth Rd.
Queen Creek AZ 85142
queencreek.azcommuniversity.com/qc/default.html

EAST VALLEY INSTITUTE OF TECHNOLOGY
 (480) 461-4000
 1601 W Main St
 Mesa AZ 85201
 evit.com

J.O. COMBS UNIFIED SCHOOL DISTRICT
 (480) 987-5300
 301 E. Combs Rd.
 San Tan Valley AZ 85140
 www.jocombs.org

LEADING EDGE ACADEMY QUEEN CREEK
 (480) 655-6787
 4815 W. Hunt Hwy
 Queen Creek AZ 85142
 leadingedgeacademy.com

QUEEN CREEK UNIFIED SCHOOL DISTRICT
 (480) 987-5938
 20217 E. Chandler Heights Rd.
 Queen Creek AZ 85142
 www.qcusd.org

UNIVERSITY OF ARIZONA - NEAR YOU NETWORK
 (520) 840-4878
 125 E Commonwealth Ave
 Chandler Arizona 85225
 ode.arizona.edu/arizona-distance-education

EMBROIDERY

ONE 5-01
 (602) 303-5646
 www.facebook.com/One501Shop

ENTERTAINMENT

BOARD AND BRUSH - QUEEN CREEK
 (480) 597-7861
 21137 E. Rittenhouse Rd., Ste 104
 Queen Creek AZ 85142
 Boardandbrush.com/queencreek

CASINO ARIZONA
 (480) 850-7852
 524 N. 92nd St.
 Scottsdale AZ 85271
 www.casinoarizona.com

ELEVATE TRAMPOLINE PARK
 (480) 590-5729
 8946 e Germann Rd.
 Queen Creek Arizona 85212
 elevatqueenecreek.com



FATCATS
 (480) 841-6044
 20660 E. Riggs Rd.
 Queen Creek AZ 85142
 http://www.fatcatsfun.com

QUEEN CREEK PERFORMING ARTS CENTER
 (480) 987-5964
 22149 E. Ocotillo Rd.
 Queen Creek AZ 85142
 www.qcpac.com

SCHNEPF FARMS
 (480) 987-3333
 24810 S. Rittenhouse Rd.
 Queen Creek AZ 85142
 www.schnepffarms.com

TED'S SHOOTING RANGE
 (480) 840-9202
 18395 S. 186th Way, Ste #106
 Queen Creek AZ 85142
 tedsrage.com

ULTIMATE DJ ENTERTAINMENT
 (908) 310-4647
 www.ultimatedjaz.com

FINANCIAL SERVICES

ANDERSON WEALTH LLC
 (480) 206-2430
 2500 S. Power Rd., Ste 223
 Mesa AZ 85209
 www.andersonwealth.org

APRICITY WEALTH MANAGEMENT
 (480) 799-8188
 4365 E. Pecos Rd.
 Gilbert AZ 85298
 apricitywealthmanagement.com/contact-1

EDWARD JONES
TOMMIE BONNER
 (480) 882-3610
 235 E. Warner Rd., Ste B-102
 Gilbert AZ 85296
 www.edwardjones.com

PRIMERICA
 (480) 888-5769
 3035 S. Ellsworth Rd., Ste #146
 Mesa AZ 85212
 www.primerica.com/bryanmcclure



RAYHONS FINANCIAL SOLUTIONS
 (480) 507-2425
 3335 E. Baseline Rd., Ste C
 Gilbert AZ 85234
 www.rayhonsfinancial.com

SAN TAN PLANNING AND INVESTMENTS, LLC.
 (480) 586-3036
 1820 E Ray Rd, Ste B110
 Chandler AZ 85225
 santanplanning.com

FITNESS

CLUB PILATES
 (480) 712-5965
 215051 S Ellsworth Loop Rd
 Queen Creek AZ 85142
 www.clubpilates.com/location/queencreek

FIT4MOM QUEEN CREEK
 (808) 683-2454
 queencreek.fit4mom.com

QUEEN CREEK/SOUTHEAST POP WARNER
 (480) 201-5040
 sepopwarner.com

FLOORING

SAN TAN WHOLESALE FLOORING LLC
 (480) 656-1133
 22209 S Ellsworth Rd.
 Queen Creek AZ 85142
 www.facebook.com/SanTanWholesaleFlooring

FOOD TRUCK

THE BURGER TROLLEY
 (626) 993-4483
 theburgerrolley.com

FUNERAL HOMES

SAN TAN MOUNTAIN VIEW FUNERAL HOME & ADVANCE PLANNING
 (480) 888-2682
 21809 S. Ellsworth Rd.
 Queen Creek AZ 85142
 santanmountainviewfuneralhome.com

GOVERNMENT

ARIZONA ARMY NATIONAL GUARD
 (602) 909-3228
 22721 S. Ellsworth Rd., Ste 100
 Queen Creek AZ 85142
 www.nationalguard.com



JACK SELLERS - MARICOPA COUNTY SUPERVISOR
 (602) 506-1776
 301 W. Jefferson, 10th Floor
 Phoenix AZ 85003
 http://www.maricopa.gov/dist1

GRAPHIC DESIGN

BRENITS CONSULTING & CREATIVE
 (917) 733-9574
 www.brenits.com



GREEN PRODUCTS DISTRIBUTOR

GREEN QC MOM
 (602) 770-0232
 www.greenqcmom.com

HEALTH AND WELLNESS CONSULTANTS

HEALTHY LIVING ADVENTURE
 (630) 404-7067
 www.healthylivingadventure.com

PEAK WHOLENESS
(801) 698-8367
www.peakwholeness.org

HEALTH SERVICES

AMISTAD CLINIC
(480) 681-6699
18914 E. San Tan Blvd, Ste 101
Queen Creek AZ 85142
www.amistadclinic.com

EAST VALLEY UROLOGY CENTER
(480) 912-2492
1155 E. Combs Rd, Ste #105
Queen Creek Arizona 85140
evucenter.com

HORIZON HEALTH AND WELLNESS
(480) 474-5518
22713 S. Ellsworth Rd.
Queen Creek AZ 85142
www.hhwaz.org

M BETH FAMILY FOUNDATION
(480) 383-3533
22329 E via Del Palo
Queen Creek Arizona 85142
mbethfoundation.org

SPIRIT MOUNTAIN HEALING CENTER
(480) 988-2165
www.spiritmountainhealing.com

HOME REPAIR

MR. APPLIANCE OF QUEEN CREEK
(480) 359-3464
mrappliance.com/queen-creek

HOSPICE

HOSPICE OF THE VALLEY
(602) 814-3694
1510 E. Flower St.
Phoenix AZ 85014
www.hospiceofthevalley.org

HOSPITALS

BANNER IRONWOOD MEDICAL CENTER
(480) 394-4549
37000 N. Gantzel Rd.
Queen Creek AZ 85140
www.bannerhealth.com



DIGNITY HEALTH MERCY GILBERT MEDICAL CENTER
(480) 728-8352
3555 S. Val Vista Dr.
Gilbert AZ 85297
www.dignityhealth.org/mercygilbert



HOTELS

COURTYARD BY MARRIOTT AT PHOENIX-MESA GATEWAY AIRPORT
(480) 351-7088
6907 E. Ray Rd.
Mesa AZ 85212
www.marriott.com/phxmz

FOUR POINTS BY SHERATON AT PHOENIX MESA GATEWAY AIRPORT
(480) 579-2161
6850 E. Williams Field Rd.
Mesa AZ 85212
www.starwoodhotels.com/fourpoints/property/overview/index.html?propertyID=4072


HAMPTON INN BY HILTON QUEEN CREEK
(480) 888-7474
20768 E. Maya Rd.
Queen Creek AZ 85142
www.hilton.com/en/hampton



ICE CREAM

DAIRY QUEEN
(480) 816-7266
20911 E. Rittenhouse Rd., Ste 101
Queen Creek AZ 85142
Dairyqueen.com

JEREMIAH'S ITALIAN ICE
(480) 268-7793
20784 E Victoria Lane, Ste 107
Queen Creek Arizona 85142
jeremiahsice.com



MENCHIE'S FROZEN YOGURT QC DISTRICT
(480) 784-3943
21295 S. Ellsworth Loop Rd., Ste 104
Queen Creek AZ 85142
menchies.com

INSURANCE

A AND H INSURANCE
(775) 300-3884
288 N Ironwood Ste 111
Apache Junction Arizona 85120
www.aandhinsurance.com

AMERICAN FAMILY INSURANCE
(480) 818-7018
1791 E queen creek rd #3
Chandler Arizona 85286
www.amfam.com

BGA INSURANCE GROUP
(215) 435-6527
7975 N Hayden Rd, Ste D-363
Scottsdale AZ 85258
www.bgainsurance.net

EMPLOYEE BENEFIT EXCHANGE, CORP
(480) 839-6100
2730 S. Val Vista Dr., Ste 132
Gilbert AZ 85295
www.ebxaz.com

FAMILY HERITAGE
(480) 980-6019
familyheritagelife.com

FARM BUREAU FINANCIAL SERVICES - NIKKI SCHAAL
(480) 279-1874
2509 S Power Rd. #106
Mesa Arizona 85209
nikkischaa.fbfsagents.com

FARMERS INSURANCE THE CURT CALVERT AGENCY
(480) 505-1221
20311 S Ellsworth Rd # 112
Queen Creek Arizona 85142
agents.farmers.com/az/queen-creek/curtis-calvert

HERENANDEZ ALLSTATE AGENCY
(480) 9697288
18521 E Queen Creek Rd Ste 106
Queen Creek AZ 85142
agents.allstate.com/anthony-hernandez-queen-creek-az.html

HUMANA - TRACY EUBANK-SLOAN
(480) 201-1128
medicareagent.humana.com/az/mesa/tracy-eubank-sloan-humana-agent

STATE FARM - PAM JOHNSON
(480) 633-0324
1489 S Higley Rd Ste 105
Gilbert AZ 85296
www.pamjohnson.com

STATE FARM - STERLING CAMPBELL
(480) 307-9116
36359 N. Gantzel Rd., Ste #102
Queen Creek AZ 85140
www.sterlinginsuranceaz.com

THE DULAIS INSURANCE TEAM AT LIBERTY MUTUAL
(480) 308-5430
1620 S. Stapley Dr., Ste #120
Mesa AZ 85204
www.libertymutual.com/queen-creek-coc

THE INSURANCE TEAM
(480) 626-1860
22246 S. Ellsworth Rd.
Queen Creek AZ 85142
www.theinsteadteam.com

INTERNATIONAL SHIPPING

CYCLONE SHIPPING
(310) 809-8482
www.cycloneshipping.com

KIETEK
(480) 218-4515
www.kietek.com

NOBLE EXPORT
(310) 850-5613

LAWYERS

HARRISON LAW, PLLC

(480) 988-7407
4365 E. Pecos Rd., Ste 139
Gilbert AZ 85295
www.harrisonlawaz.com



QUEEN CREEK LAW FIRM

(602) 529-6144
www.queencreeklawfirm.com

RONEY BUSINESS LAW

(682) 800-2993
www.roneybusinesslaw.com

WILSON-GOODMAN LAW GROUP, PLLC

(480) 503-9217
1760 E. Pecos Rd., Ste 315
Gilbert AZ 85225
www.wgandf-law.com

ZACHARY LAW GROUP

(480) 389-3533
625 N. Gilbert Road Ste #201
Gilbert Arizona 85282
zacharylawsgroup.com



LOCKSMITH

LOCAL LOCKSMITH

(480) 570-5391
www.locallocksmithaz.com

MAILING

THE UPS STORE # 4920

(480) 987-2297
18521 E. Queen Creek Rd.
Queen Creek AZ 85142
www.theupsstorelocal.com/4920

MARKETING SERVICES

DEBELLEVUE GLOBAL MARKETING AGENCY

(970) 640-3314
www.debellevueglobal.com

RADIANT MARKETING

(480) 277-4974
www.radiantmarketingaz.com

MASSAGE AND SPA

ELEMENTS MASSAGE QUEEN CREEK

(480) 300-4056
40930 N. Ironwood Dr., Ste #106
Queen Creek AZ 85140
www.elementsmassage.com/queen-creek

MEDICAL SPECIALISTS

ARTISAN PROSTHETICS

(602) 667-7827
1131 E. Highland Avenue
Phoenix AZ 85014
artisanprosthetics.com

IMPRESSION FOOT & ANKLE

(480) 321-8267
37100 N. Gantzel Rd., Ste 214
San Tan Valley AZ 85140
www.impressionfoot.com

MERCHANT SERVICES

MERITUM

(602) 303-3442
www.meritumusa.com

METAL FABRICATOR

CMC STEEL ARIZONA

(480) 396-7100
11444 E. Germann Rd.
Mesa AZ 85212
www.cmcsteelaz.com

MOBILE ABRASIVE BLASTING SERVICES

ROYAL BLASTING ARIZONA

(480) 549-1848
www.royalblastingarizona.com

MOBILE APPS

PHOENIX AREA COMMUNITY APP

(832) 691-0665

MOBILE PHONE SERVICES

T-MOBILE

(480) 888-7055
21582 S Ellsworth Loop Rd Ste 114
Queen Creek AZ 85142
t-mobile.com

MOTOR VEHICLE LICENSING

POWER TAGS, TITLES & MORE

(480) 677-3132
3125 W. Hunt Hwy, Ste 104
Queen Creek AZ 85142
www.powertagtitlesandmore.net

NON-PROFITS

AMERICAN LEGION POST 129

(602) 568-7407
22246 S. Ellsworth Rd.
Queen Creek AZ 85142
www.queencreeklegion.com

DIVINE MOVEMENT

(480) 665-5344
divinemove.org

HOUSE OF REFUGE

(480) 988-9242
6935 E. Williams Field Rd.
Mesa AZ 85212
www.houseofrefuge.org

THE CHANGE PROJECT

(602) 214-2787
www.thechangeproject.us

UNITED FOOD BANK

(480) 398-4464
358 E. Javelina Avenue
Mesa AZ 85210
www.unitedfoodbank.org

ORTHODONTICS

PETERSON FAMILY ORTHODONTICS

(480) 725-9272
40615 N. Gantzel Rd., Ste 107
San Tan Valley AZ 85140
petersonfamilyortho.com

OUTDOOR HOME DESIGN

EAST VALLEY OUTDOOR LIVING

(480) 988-4616
7931 E. Pecos Rd., Ste 155
Mesa AZ 85212
www.evolspaces.com

PEST CONTROL

AFFORDABLE PEST CONTROL

(480) 907-7913
2769 E. Combs Rd., Bldg G2
San Tan Valley AZ 85140
www.affordablepestservice.com

VARSITY TERMITE AND PEST CONTROL

(602) 757-8252
6056 E. Baseline Rd., Ste 122
Mesa AZ 85206
www.varsitytermiteandpestcontrol.com

PHOTOGRAPHERS

HK PHOTO SMILES, INC

(480) 448-6779
www.hkphotosmiles.com

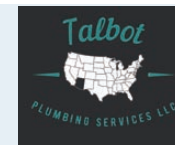
PLUMBING SERVICES

QUEEN CREEK PLUMBING & SEPTIC SERVICE

(480) 987-8051
www.cartrightsplumbing.com

TALBOT PLUMBING SERVICES

(480) 241-5375
talbotplumbingservices.com



POOL SERVICES

SUNRISE POOL CARE

(480) 275-5933
www.sunrisepoolcare.com

THE EDGE POOLS

(480) 422-8470
www.theedgeremodeling.com

PORTA POTTY AND DUMPSTER RENTAL

ARIZONA PORTABLES

(602) 610-1220
892 W 1st Ave
Mesa AZ 85210
arizonaportables.com



PRINTING

INTERNATIONAL MINUTE PRESS OF GILBERT

(480) 507-8255
1140 N Gilbert Rd, Ste 104
Gilbert Arizona 85234
www.impgilbert.net

PATRIOT PRINTING AND PROMO

(480) 707-3599
www.patriotprintingandpromo.com

PROMOTIONAL ITEMS

DUELFORCE PROMOTIONS

(307) 630-6644
www.duelforcepromo.com

PUBLICATIONS/NEWSPAPERS

BELOCAL QUEEN CREEK

(480) 862-0288
belocalpub.com/location/queen-creek

EAST VALLEY COURIER NEWS

(928) 277-3958
2066 W Apache Tr. #112
Apache Junction Arizona 85120

INDEPENDENT NEWSMEDIA

(480) 580-2204
queencreekindependent.com

REALTORS

HOMESMART LIFESTYLES

(480) 390-6683
21820 S. Ellsworth Rd., Ste 104
Queen Creek AZ 85142
www.homesmartlifestyles.com

KNIGHT AND ASSOCIATES

(480) 745-5139
22027 S Ellsworth Rd
Queen Creek Arizona 85142
knightandassociatesaz.com



LIBERTAS REAL ESTATE

(623) 760-7280
libertasrealestate.com



LISA FOX, PLLC

(480) 251-6014
www.lisafoxazrealtor.com

LORIE SCHENCK, REALTOR

(602) 341-3013
Lorieannschenck.com

MELANIE NEMETZ TEAM- FOSTERING

RELATIONSHIPS

(209) 303-5318
fosteringre.com



NEWMAN REALTY

(480) 993-8653
www.newmanrealtыз.com

NEW TRADITIONS REALTY

(480) 250-6460
www.ntraz.com

NEXT HOME ALLIANCE

(480) 225-7188
22246 S Ellsworth Rd.
Queen Creek AZ 85142
nexthomealliance.com



OPENSHAW REAL ESTATE GROUP

(480) 930-4397
www.herfelopenshaw.com

PELOQUIN AZ

(602) 832-1113
www.peloquinaz.com

ROVER REALTY

(602) 782-2444
4115 E. Auto Valley Dr., Ste #104
Mesa AZ 85206
www.myhometeamaz.com

THE LYNCH TEAM AT CONWAY REAL ESTATE

(480) 570-0600
1425 W Elliot Rd, #103
Gilbert AZ 85233
www.thelynchteamaz.com

RESIDENTAL PROPERTY MANAGEMENT

SNOWBIRD HOME SERVICE

(480) 313-9632
www.snowbirdhomeservice.net

RESTAURANTS

CHICK-FIL-A

(480) 834-0757
20455 E. Rittenhouse Rd.
Queen Creek AZ 85142
www.chick-fil-a.com/queencreek

CREEK SIDE TACO SHACK

(928) 380-6456
20401 S. Sossaman Rd.
Queen Creek AZ 85142
www.creeksidetacoshack.com

DRIZZLE DONUT Co

(480) 388-2045
20311 S Ellsworth Rd, 114
Queen Creek Arizona 85142
www.drizzledonutco.com

FIVE GUYS BURGER & FRIES

(480) 534-5454
20784 E. Victoria Lane
Queen Creek AZ 85142
www.fiveguys.com

OLD ELLSWORTH BREWING COMPANY

(480) 935-2796
22005 S. Ellsworth Rd.
Queen Creek AZ 85142
www.oldebc.com

QUEEN CREEK OLIVE MILL

(480) 888-9290
25062 S. Meridian Road
Queen Creek Arizona 85142
www.queencreekolivemill.com

SAUCE PIZZA & WINE

(480) 902-4877
20491 E. Rittenhouse Rd.
Queen Creek AZ 85142
www.saucepizzaandwine.com

SIDEWALK COFFEE AND BAGEL Co.

(480) 428-5444
20784 E Victoria Lane Unit 106
Queen Creek AZ 85142
www.sidewalkcoffeeco.com

VERO CHICAGO PIZZERIA

(847) 819-1841
18423 E. San Tan Blvd
Queen Creek AZ 85142
verochicagopizza.com

WHATABURGER

(480) 228-9330
20151 S. Ellsworth Rd.
Queen Creek AZ 85142
whataburger.com

RETAIL

BOOT BARN

(480) 762-0322
21102 S Ellsworth Loop Rd
Queen Creek AZ 85142
bootbarn.com

QUEEN CREEK MARKETPLACE

(602) 553-2703
21398 S. Ellsworth Loop Rd.
Queen Creek AZ 85142
www.queencreekmarketplace.com

THE PORK SHOP

(480) 987-0101
3359 E. Combs Rd.
San Tan Valley AZ 85140
http://www.theporkshopaz.com

SCISSOR LIFT RENTALS

PROLIFT RENTAL

(480) 925-6190
18329 East Navajo Drive
Queen Creek Arizona 85142
proliftrental.com

SENIOR LIVING ASSISTANCE

ALL ABOUT YOU PLACEMENT
(480) 703-5206
allaboutyouplacement.com

SPECIALITY ITEMS

FILL YOUR CUP OF COFFEE
(360) 852-0164
www.fillyourcupofcoffee.com

TAX SERVICES

ROCK SOLID TAX AND ACCOUNTING LLC
(480) 322-8207
8830 E. Germann Rd., Ste 5
Mesa AZ 85212
www.rocksolidtaxandaccounting.com

TITLE AGENCY

CLEAR TITLE AGENCY OF ARIZONA
(480) 293-4705
cleartitleaz.com

GRAND CANYON TITLE AGENCY
(480) 686-0018
22036 S. Ellsworth Rd.
Queen Creek AZ 85143
www.gcta.com

SECURITY TITLE AGENCY
(702) 600-9588
21820 S Ellsworth Rd Ste 102
Queen Creek Arizona 85142
www.securitytitle.com

UTILITIES

REPUBLIC SERVICES
(623) 241-8429
3053 N. Maple
Mesa AZ 85215
www.republicservices.com



RIGHT AWAY DISPOSAL
(480) 983-9100
3755 S. Royal Palm Rd.
Apache Junction AZ 85119
www.RightAwayDisposal.com

SALT RIVER PROJECT
(602) 236-8888
1500 N. Project Dr.
Tempe AZ 85282
srpnet.com

VENUE

ENCANTERRA COUNTRY CLUB
(480) 677.8000
36460 N. Encanterra Dr.
Queen Creek AZ 85140
www.mytrilogylife.com/encanterra

WEBSITE SERVICES

MIDWEB SOULTIONS
(480) 757-0197
www.midwebsolutions.com

WEED CONTROL

EAST VALLEY WEED CONTROL
(480) 900-5580
www.evweeds.com

WINDOW TREATMENTS

STYLE WISE SHUTTERS AND BLINDS
(480) 450-1081
stylewiseshuttersandblinds.com

YOUTH DEVELOPMENT

CANYON STATE ACADEMY
(480) 987-2037
20061 E. Rittenhouse Rd.
Queen Creek AZ 85142
canyonstateacademy.com





LET'S GET TO WORK

NINE AREAS OF INTEREST WITH CLEAR PATHS TO A DEGREE, CERTIFICATE, OR UNIVERSITY TRANSFER.

PATHS TO GREAT CAREERS




Central Arizona College
www.centralaz.edu

A legacy of caring

Hospice, dementia and chronic illness care
Music, massage, pet therapy
Military veteran recognition
Grief Support
Volunteer opportunities

Call 24/7 to speak with a nurse
As a not-for-profit, we turn no one away



HOSPICE of the VALLEY
(602) 530-6900 hov.org

Keep Your BACK in MOTION



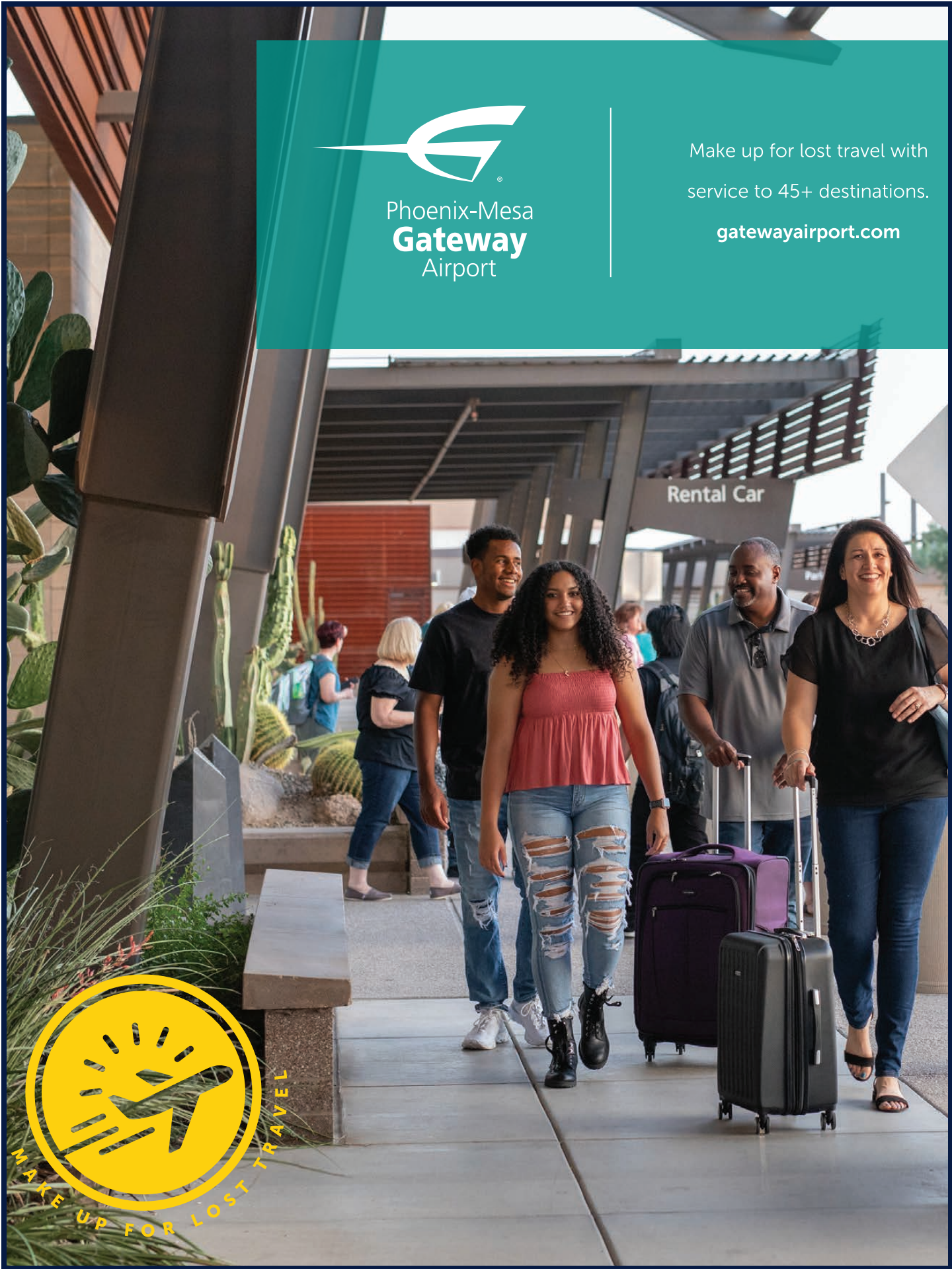
Cold Laser
Therapeutic Massage
Graston Technique
Interferential Electrical Stimulation
Heat & Cold (Cryotherapy)
Functional Foot Orthotics by Foot Levelers

JOIN OUR MEMBER WELLNESS PROGRAM

Dr. Kolby Wolfley
chirotrendz
family chiropractic and wellness center
keeping things in motion

Call or Text for an Appointment
480.999.4700
www.ChiroTrendz.com

18610 E. Rittenhouse Rd., Bldg A, Ste 101, Queen Creek, Az



Make up for lost travel with
service to 45+ destinations.
gatewayairport.com



Where do you go when a slippery floor bursts your bubble?

Our ERs and Urgent Cares are ready for whatever, whenever.

With convenient locations across the valley, offering trusted emergency care and a safe environment, our ERs and Urgent Cares are ready 24/7, every day of the year. Because when an emergency happens, your health is too important to wait.

Check in online to schedule your ER visit at DignityHealth.org/emergency-care.



Mesa
Arizona General Hospital
9130 E. Elliot Road
Mesa, AZ 85212

San Tan Valley
Arizona General Hospital
1419 W. Hunt Highway
San Tan Valley, AZ 85143



Angel Air

COOLING & HEATING, LLC

RESIDENTIAL
COMFORT PACKAGES

480-298-0353

www.AngelAirCooling.com

ROC-227821

1 YR PREPAID INSPECTION \$140

2 VISITS PER YEAR (SPRING / FALL)
1 COOLING INSPECTION IN SPRING
1 HEATING INSPECTION IN FALL
90 DAY LABOR WARRANTY
ON REPAIRS
NO OVERTIME RATES

2 YR MAINTENANCE PACKAGE \$380

2 VISITS PER YEAR (SPRING / FALL)
COOLING & HEATING SYSTEM
CHECK-OUT
10% OFF PARTS & LABOR
(ON REPAIRS, EXCLUDES NEW UNIT INSTALL)
NO SERVICE CALL FEES
1 YEAR PARTS & LABOR
WARRANTY ON REPAIRS
YEARLY CONDENSER COIL
RINSE WITH WATER
NO OVERTIME RATES
PRIORITY SERVICE FOR BREAKDOWNS
CONDENSATE DRAIN LINE CLEAN OUT
WITH EZ CLEAN TRAP

\$342* FOR EACH ADDITIONAL UNIT

3 YR MAINTENANCE PACKAGE \$590

2 VISITS PER YEAR (SPRING / FALL)
COOLING & HEATING SYSTEM
CHECK-OUT
15% OFF PARTS & LABOR
(ON REPAIRS, EXCLUDES NEW UNIT INSTALL)
NO SERVICE CALL FEES
2 YEAR PARTS & LABOR
WARRANTY ON REPAIRS
YEARLY CONDENSER COIL CLEANING
WITH FOAMING CLEANER
NO OVERTIME RATES
PRIORITY SERVICE FOR BREAKDOWNS
CONDENSATE DRAIN LINE CLEAN OUT
WITH EZ CLEAN TRAP

\$502* FOR EACH ADDITIONAL UNIT